



DuPage Water Commission

600 E. Butterfield Road, Elmhurst, IL 60126-4642
(630)834-0100 Fax: (630)834-0120

AGENDA

ENGINEERING & CONSTRUCTION COMMITTEE
THURSDAY, MAY 14, 2009
7:00 P.M.

COMMITTEE MEMBERS

W. Maio, Chair
L. Hartwig
W. Mueller
A. Poole

600 EAST BUTTERFIELD ROAD
ELMHURST, IL 60126

- I. Roll Call
- II. Approval of Committee Meeting Minutes of April 9, 2009

RECOMMENDED MOTION: To approve the Minutes of the April 9, 2009 Committee Meeting of the DuPage Water Commission.

- III. Report of Status of Construction/Operations
- IV. Partial Pay Request

Quick Response Contracts

- Electrically Test 5KVA Lines from Transformer Yard into the DuPage Electrical Room (QRE4-002A) Authorized by R-15-09 \$1,745.46

RECOMMENDED MOTION: The Engineering Committee recommends to the Commission approval of payments in the amount of \$1,745.46 as part of the accounts payable, subject to submission of all contractually required documentation.

- V. Resolution No. R-25-09: A Resolution Approving and Ratifying Certain Work Authorization Orders Under Quick Response Contract QR-8/08 at the May 14, 2009, DuPage Water Commission Meeting.
 - Work Authorization Order No. 011 to Rossi Contractors Incorporated **estimated cost \$6,600.00**
 - Work Authorization Order No. 012 to Rossi Contractors Incorporated **estimated cost \$7,800.00**
 - Work Authorization Order No. 013 to Rossi Contractors Incorporated **estimated cost \$25,000.00**

RECOMMENDED MOTION: The Engineering Committee recommends to the Commission approval of Resolution No. R-25-09: A Resolution Approving and Ratifying Certain Work Authorization Orders Under Quick Response Contract QR-8/08 at the May 14, 2009, DuPage Water Commission Meeting.

- VI. Resolution No. R-26-09: A Resolution Approving and Ratifying Certain Task Orders Under a Master Contract with EN Engineering, LLC at the May 14, 2009, DuPage Water Commission Meeting.

- estimated cost \$130,000.00

RECOMMENDED MOTION: The Engineering Committee recommends to the Commission approval of Resolution No. R-26-09: A Resolution Approving and Ratifying Certain Task Orders Under a Master Contract with EN Engineering, LLC at the May 14, 2009, DuPage Water Commission Meeting.

- VII. Resolution No. R-27-09: A Resolution Approving and Ratifying Certain Task Orders Under a Master Contract with Peters & Associates, Inc. at the May 14, 2009, DuPage Water Commission Meeting.

- estimated cost \$3,600.00

RECOMMENDED MOTION: The Engineering Committee recommends to the Commission approval of Resolution No. R-27-09: A Resolution Approving and Ratifying Certain Task Orders Under a Master Contract with Peters & Associates, Inc. at the May 14, 2009, DuPage Water Commission Meeting.

- VIII. Resolution No. R-28-09: A Resolution Approving and Ratifying Certain Contract Change Orders at the May 14, 2009, DuPage Water Commission Meeting.

- estimated cost \$36,131.00

RECOMMENDED MOTION: The Engineering Committee recommends to the Commission approval of Resolution No. R-28-09: A Resolution Approving and Ratifying Certain Contract Change Orders at the May 14, 2009, DuPage Water Commission Meeting.

- IX. Resolution No. R-30-09: A Resolution Approving a Second Amendment to Task Order No. 4 under the Master Contract with Greeley and Hansen LLC at the May 14, 2009, DuPage Water Commission Meeting.

- increase the not-to-exceed cost of the services by \$7,500.00, for a total not-to-exceed cost limit of \$89,231.00.

RECOMMENDED MOTION: The Engineering Committee recommends to the Commission approval of Resolution No. R-30-09: A Resolution Approving a Second Amendment to Task Order No. 4 under the Master Contract with Greeley and Hansen LLC at the May 14, 2009, DuPage Water Commission Meeting.

- X. Resolution No. R-31-09: A Resolution Directing Advertisement for Bids on a Contract for the Construction of DuPage County Glen Ellyn Heights Meter Station 9A (Contract MS-18/09) at the May 14, 2009, DuPage Water Commission Meeting.

RECOMMENDED MOTION: The Engineering Committee recommends to the Commission approval of Resolution No. R-31-09: A Resolution Directing Advertisement for Bids on a Contract for the Construction of DuPage County Glen Ellyn Heights Meter Station 9A (Contract MS-18/09) at the May 14, 2009, DuPage Water Commission Meeting.

- XI. Resolution No. R-32-09: A Resolution Directing Advertisement for Bids on a Contract for the Construction of DuPage County Hobson Valley (Greene Road) Meter Station 9B (Contract MS-19/09) at the May 14, 2009, DuPage Water Commission Meeting.

RECOMMENDED MOTION: The Engineering Committee recommends to the Commission approval of Resolution No. R-32-09: A Resolution Directing Advertisement for Bids on a Contract for the Construction of DuPage County Hobson Valley (Greene Road) Meter Station 9B (Contract MS-19/09) at the May 14, 2009, DuPage Water Commission Meeting.

- XII. Resolution No. R-33-09: A Resolution Approving and Ratifying Certain Work Authorization Orders Under Quick Response Electrical Contract QRE-4/08 at the May 14, 2009, DuPage Water Commission Meeting.

- Work Authorization Order No. 010 to Divane Brothers Electric Company.
- estimated cost \$24,100.00

RECOMMENDED MOTION: The Engineering Committee recommends to the Commission approval of Resolution No. R-33-09: A Resolution Approving and Ratifying Certain Work Authorization Orders Under Quick Response Contract QRE-4/08 at the May 14, 2009, DuPage Water Commission Meeting.

- XIII. Adjournment

**MINUTES OF A MEETING OF THE
ENGINEERING & CONSTRUCTION COMMITTEE
OF THE DUPAGE WATER COMMISSION
HELD ON THURSDAY, APRIL 9, 2009
600 EAST BUTTERFIELD ROAD
ELMHURST, ILLINOIS**

The meeting was called to order at 7:03 P.M.

Committee members in attendance: W. Maio, W. Mueller, A. Poole, L. Hartwig, and S. Louis Rathje *ex officio*.

Committee members absent: None

Also in attendance: J. Schori, E. Kazmierczak, M. Weed, R.C. Bostick, F. Frelka, and J. Nesbitt.

Commissioner Hartwig moved to approve the Minutes of the January, 8, 2009 Engineering Committee. Motion seconded by Commissioner Poole and passed unanimously as follows:

Aye: W. Maio, W. Mueller, L. Hartwig, and A. Poole
Nay: None
Absent: None

Commissioner Maio asked for a brief summary of the memorandum regarding the Status of Operations dated April 3, 2009. Staff went over the highlights of the memo.

Commissioner Hartwig moved to recommend to the Commission approval of payments in the amount of \$14,710.01 as part of the accounts payable, subject to submission of all contractually required documentation. Motion seconded by Commissioner Mueller and passed unanimously as follows:

Aye: W. Maio, W. Mueller, L. Hartwig, and A. Poole
Nay: None
Absent: None
Quick Response Contracts

1. Repair Leak in 12" Ductile Iron Water Main on Park Blvd in Glen Ellyn (QR8-009A) Authorized by R-10-09 \$11,934.61
2. Repair/Replace Conduit & Cables Between Control Cabinet and Valve Vault 75th & Fairview in Darien (QRE4-001A) Authorized by R-15-09 \$2,775.49

Engineering Meeting Minutes April 9, 2009

Commissioner Poole inquired as to the status of the Lexington generation project and if J.J. Henderson was on schedule. Staff informed him that the job was behind schedule due to permitting problems with the City of Chicago and the CTA.

Commissioner Poole inquired as to the status of the barbwire removal on the fence along Cadwell Ave. Staff informed him that the barbwire removal would be handled by Commission staff.

Commissioner Mueller moved to recommend to the Commission approval of Resolution No. R-20-09: A Resolution Approving and Ratifying Certain Work Authorization Orders Under Quick Response Contract QR-8/08 at the April 9, 2009, DuPage Water Commission Meeting. Motion seconded by Commissioner Poole. The motion passed unanimously as follows:

Aye: W. Maio, W. Mueller, L. Hartwig, and A. Poole
Nay: None
Absent: None

Commissioner Poole moved to recommend to the Commission approval of Resolution No. R-21-09: A Resolution Approving and Ratifying Certain Contract Change Orders at the April 9, 2009, DuPage Water Commission Meeting Resolution. Motion seconded by Commissioner Poole. Commissioner Hartwig inquired about the progress on the job. Staff informed him that the Commission and the Department of Water Management were working on expediting the permit process with the CTA. The motion passed unanimously as follows:

Aye: W. Maio, W. Mueller, L. Hartwig, and A. Poole
Nay: None
Absent: None

Commissioner Mueller moved to recommend to the Commission approval of Resolution No. R-24-09: A Resolution Approving and Authorizing the Execution of a Master Contract with Peters & Associates, Inc. for Computer Consulting Services at the April 9, 2009 Commission Meeting. Motion seconded by Commissioner Hartwig. Commissioner Maio wanted a statement included in the minutes that the General Manager made it very clear to all the Commissioners that there would not be any personal conflicts with Peters & Associates and that General Manager Martin's son would never work on any Commission projects. Commissioners Hartwig, Mueller, and Poole all agreed and seconded Commissioner Maio's comments. The motion passed unanimously as follows:

Aye: W. Maio, W. Mueller, L. Hartwig, and A. Poole
Nay: None
Absent: None

Engineering Meeting Minutes April 9, 2009

Commissioner Poole moved to adjourn the meeting at 7:13 P.M. Motion seconded by Commissioner Hartwig and unanimously approved by a Voice Vote.

All voted aye. Motion carried.

BOARD/MINUTES/ENG090409.doc



DuPage Water Commission

MEMORANDUM

TO: Robert Martin General Manager

FROM: Terry McGhee Manager of Water Operations
Ed Kazmierczak Pipeline Supervisor
Chris Bostick Facilities Construction Supervisor
John Schori Instrumentation Supervisor
Frank Frelka GIS Coordinator
Mike Weed Operations Supervisor

DATE: May 8, 2009

SUBJECT: Status of Operations

Operations Overview

The Commission's sales for the month of April were a total of 2.096 billion gallons. This represents an average day demand of 69.9 million gallons per day (MGD), which is lower than the April 2008 average day demand of 72.8 MGD. The maximum day demand was 74.1 MGD on April 25, 2009, which is lower than the April 2008 maximum day demand of 81.3 MGD. The minimum day flow was 61.9 MGD. The Commission's recorded total precipitation for the month of April was 5.20 inches compared to 2.63 inches for April 2008. The level of Lake Michigan for April 2009 is 577.73 (Feet IGLD 1985) compared to 576.71 (Feet IGLD 1985) for April of 2008.

Water Conservation

The Water Conservation Planning Group has developed a logo and tagline for the program. The planning group is scheduling utility training and investigating the purchase of plan resources. The next meeting will be held at the end of May.

Computer Room Cooling System

Hill Mechanical has completed the installation and Primera has completed the commissioning of the cooling units. The contract will be closed out as soon as we receive final documentation.

Document Management

Staff is working with the CLS Group to complete the initial document inventory that will be sent to the Secretary of State for their destruction authorization. Bids for the Document Management software were received.

Facilities Construction Overview

Contract PSD-6 Reservoir Addition - Division A – Equipment Storage Building and Material Storage

The Building Permit has been issued. The Contractor is mobilizing to the site and intends to break ground the week of May 11th. Part of Building Permit requirements are a wet-pipe fire suppression system and additional storm water facilities. This will result in a future change order request. The project completion remains as August 4, 2009.

Contract PSD-7 DPPS Electrical Generation

The Contractor has been performing excavation and placement of concrete; structural steel erection; under slab and site utilities. ComEd distribution work has been completed with the seamless transition of the 34kV Change Order No 2 appears on the agenda as R-28-09 for conflicts encountered during sanitary sewer casing installation, the addition of a footing drain system and modification of the rainwater collection system. The project completion date remains November 25, 2010. The PSD-7 office furnishings have been submitted for review by the Engineer and Staff. The Contractor has also provided his break down for the office furnishings out of the Lump Sum Contract. A memorandum has been submitted to the Board regarding this matter.

Generator Supply Contract

The generator equipment factory testing is tentatively scheduled for June 2009 with deliver to the DuPage Pumping Station following shortly thereafter. The delivery to the Lexington Pumping Station will be delayed.

Contract PSC-4 Lexington Pump Station Electrical Generation / Variable Frequency Drives

The contractor continues work along the new south access driveway, placing the pavement sub-base. The City of Chicago's permitting process continues to delay the excavation of site utilities and foundations for the buildings. The project completion date is July 21, 2010.

Contract PSC-5 Lexington Photovoltaic Cells

The Contractor is being held up until the Building Permit is issued for the entire site. The City of Chicago has been awarded a grant from the Illinois Department

of Commerce and Economic Opportunity (ILDCEO) in the amount of \$250,000. We looked into the feasibility of increasing the size of the solar generation capacity and the recommendation is to not use the grant for expansion. The project completion date remains July 10, 2010.

Winfield Additional Connection

Staff is working with ComEd and the Village to resolve the MS-27A access issues.

Naperville Additional Connection

AECOM has completed the hydraulic analysis and the final report will be delivered to Naperville next week.

DuPage County Service Areas

Preliminary design services for the Glen Ellyn Heights and Greene Road service areas are ongoing. The County State's Attorney office has reviewed the Joint Facility Agreement as approved by the Board at the April meeting. They are also reviewing the easement language as approved previously in the Subsequent Customer Agreement and the Joint Facilities Agreement as it relates to their proposed facility sites. DPC and DWC Staff are also working to locate the facilities within the proposed sites while addressing challenges such as existing floodways in Glen Ellyn Heights and attempting to minimize large diameter tree removal in Hobson Valley. Authorization to seek bids for both the Hobson Valley and Glen Ellyn Heights service areas appear on the agenda as R-31-09 and R-32-09.

Electrical Safety for DWC Employees

The arc flash studies performed by Greeley and Hansen need to be updated to meet the 2009 NFPA 70 revisions. This is the Second Amendment to Task Order No. 4 and appears on the agenda as R-30-09.

Contract VA-1

Electrical Systems Inc. has placed the order for the equipment. Commission staff has started reviewing the equipment submittals.

GIS

As-built Drawing

Patrick Engineering submitted a set of draft AutoCAD standards that will standardize future AutoCAD documents. Patrick is also finishing up a set of mechanical system drawings that show existing conditions with data extracted and reformatted from older drawing sets. The final deliverable will be a matrix of

options and costs for drawings all of the pumping facility systems. Follow on work for this project may involve competitive bidding due to the scope of work.

Intranet site

Staff has implemented Microsoft SharePoint Services for its employee Intranet web site. This change was made because SharePoint is easier to work with than the currently used Dreamweaver software and multiple individuals will now be able to post content on the site.

Close Interval Survey

GIS staff is preparing to support the steel pipeline close interval survey and spot data collection projects to be conducted by EN Engineering this summer. This includes determining how to store data in the Infor enterprise asset management system and developing appropriate reports.

Pipeline Construction Overview

CONTRACT QR-8/08 (QUICK RESPONSE CONTRACT)

Work Authorization No. 3 for the installation of a bonding cable between two existing reverse current switches will begin following permit approval from the CTA and the CSX Railroad.

CONTRACT VSR-1 (VALVE STEM REPLACEMENT)

Design is approximately 70% complete.

Contract TS-8 (South Transmission Main Corrosion Mitigation Project)

60 day notices will be going out within the next 2 weeks. The contract is expected to be advertised in June with construction beginning sometime in July or August.

Contract TS-7(South Transmission Main Relocation)

Revised plans and specs will be going out for review and comment during the week of May 18th.

MAY 2009 COMMISSION AGENDA ITEMS:

R-25-09-----A Resolution Approving and Ratifying Certain Work Authorization Orders Under Quick Response Contract QR-8/08 at the May 14, 2009, DuPage Water Commission Meeting

R-26-09-----A Resolution Approving and Ratifying Certain Task Orders Under a Master Contract with EN Engineering, LLC at the May 14, 2009, DuPage Water Commission Meeting.

R-27-09-----A Resolution Approving and Ratifying Certain Task Orders Under a Master Contract with Peters & Associates, Inc. at the May 14, 2009, DuPage Water Commission Meeting.

R-28-09-----A Resolution Approving and Ratifying Certain Contract Change Orders at the May 14, 2009, DuPage Water Commission Meeting.

R-30-09-----A Resolution Approving a Second Amendment to Task Order No. 4 under the Master Contract with Greeley and Hansen LLC at the May 14, 2009, DuPage Water Commission Meeting.

R-31-09-----A Resolution Resolution Directing Advertisement for Bids on a Contract for the Construction of DuPage County Glen Ellyn Heights Meter Station 9A (Contract MS-18/09 at the May 14, 2009, DuPage Water Commission Meeting.

R-32-09-----A Resolution Resolution Directing Advertisement for Bids on a Contract for the Construction of DuPage County Hobson Valley (Greene Road) Meter Station 9B (Contract MS-19/09 at the May 14, 2009, DuPage Water Commission Meeting.

R-33-09-----A Resolution Approving and Ratifying Certain Work Authorization Orders Under Quick Response Contract QRE-4/08 at the May 14, 2009, DuPage Water Commission Meeting.

1. DuPage Laboratory Bench Sheets for April, 2009
2. Water Sales Analysis 01-September-03 to 30-April-09
3. Chart showing Commission sales versus allocations
4. Chart showing Commission sales versus historical averages
- 5.

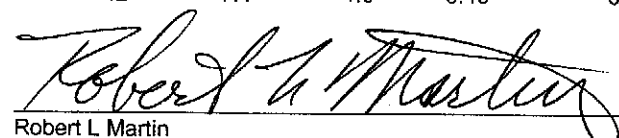
DUPAGE WATER COMMISSION LABORATORY BENCH SHEET
MONTHLY REPORT FOR APRIL 2009

LEXINGTON SUPPLY

DUPAGE DISCHARGE

DAY	FREE CL ₂ mg/l	TURBIDITY NTU	PO ₄ mg/l	FREE CL ₂ mg/l	TURBIDITY NTU	TEMP °F	pH	Fluoride	PO ₄ mg/l	P.A.C. LBS/MG	ANALYST INT
1	0.70	0.10	0.48	0.72	0.09	42	7.5	1.2	0.43	0	GA
2	0.74	0.10	0.48	0.76	0.09	42	7.4	1.0	0.52	0	RC
3	0.73	0.10	0.46	0.77	0.09	43	7.4	1.1	0.60	0	RC
4	0.73	0.10	0.47	0.78	0.09	44	7.4	1.0	0.61	0	RC
5	0.74	0.11	0.46	0.76	0.09	44	7.4	1.0	0.65	0	RC
6	0.69	0.10	0.46	0.74	0.08	44	7.4	1.2	0.43	0	GA
7	0.71	0.10	0.48	0.72	0.09	44	7.5	1.2	0.44	0	GA
8	0.71	0.09	0.45	0.74	0.08	44	7.5	1.2	0.45	0	GA
9	0.69	0.09	0.45	0.74	0.10	44	7.5	1.2	0.43	0	GA
10	0.72	0.10	0.45	0.76	0.10	44	7.4	1.2	0.63	0	RC
11	0.71	0.09	0.43	0.73	0.08	44	7.4	1.0	0.50	0	RC
12	0.71	0.11	0.44	0.74	0.09	45	7.4	1.0	0.55	0	RC
13	0.74	0.10	0.47	0.77	0.09	45	7.4	1.0	0.65	0	RC
14	0.70	0.09	0.45	0.77	0.08	46	7.5	1.0	0.51	0	GA
15	0.71	0.09	0.46	0.73	0.08	48	7.5	1.0	0.47	0	GA
16	0.73	0.09	0.43	0.75	0.07	47	7.5	1.0	0.49	0	GA
17	0.74	0.10	0.48	0.74	0.09	47	7.4	1.0	0.51	0	GA
18	0.73	0.09	0.43	0.75	0.10	47	7.5	1.0	0.49	0	RC
19	0.75	0.10	0.45	0.75	0.10	47	7.5	1.0	0.63	0	RC
20	0.76	0.10	0.45	0.77	0.08	47	7.4	1.0	0.58	0	RC
21	0.74	0.10	0.45	0.77	0.08	47	7.4	1.0	0.51	0	RC
22	0.71	0.11	0.43	0.73	0.08	47	7.4	1.0	0.48	0	GA
23	0.72	0.11	0.43	0.74	0.09	48	7.4	1.0	0.46	0	GA
24	0.74	0.12	0.44	0.75	0.09	48	7.5	1.0	0.54	0	RC
25	0.72	0.11	0.43	0.75	0.09	48	7.5	1.0	0.48	0	GA
26	0.73	0.12	0.45	0.76	0.08	58	7.5	1.1	0.55	0	JV
27	0.72	0.11	0.44	0.77	0.08	50	7.5	1.1	0.63	0	JV
28	0.74	0.09	0.45	0.77	0.09	50	7.4	1.0	0.49	0	JV
29	0.71	0.09	0.46	0.75	0.09	50	7.5	1.1	0.52	0	JV
30	0.69	0.09	0.43	0.72	0.09	51	7.4	1.1	0.48	0	MR
AVG	0.72	0.10	0.45	0.75	0.09	47	7.4	1.1	0.52	0	
MAX	0.76	0.12	0.48	0.78	0.10	58	7.5	1.2	0.65	0	
MIN	0.69	0.09	0.43	0.72	0.07	42	7.4	1.0	0.43	0	


Terrance McGhee
Manager of Water Operations


Robert L. Martin
General Manager

DU PAGE WATER COMMISSION
WATER SALES ANALYSIS

01-May-92 TO 30-Apr-09

PER DAY AVERAGE 81,753,414

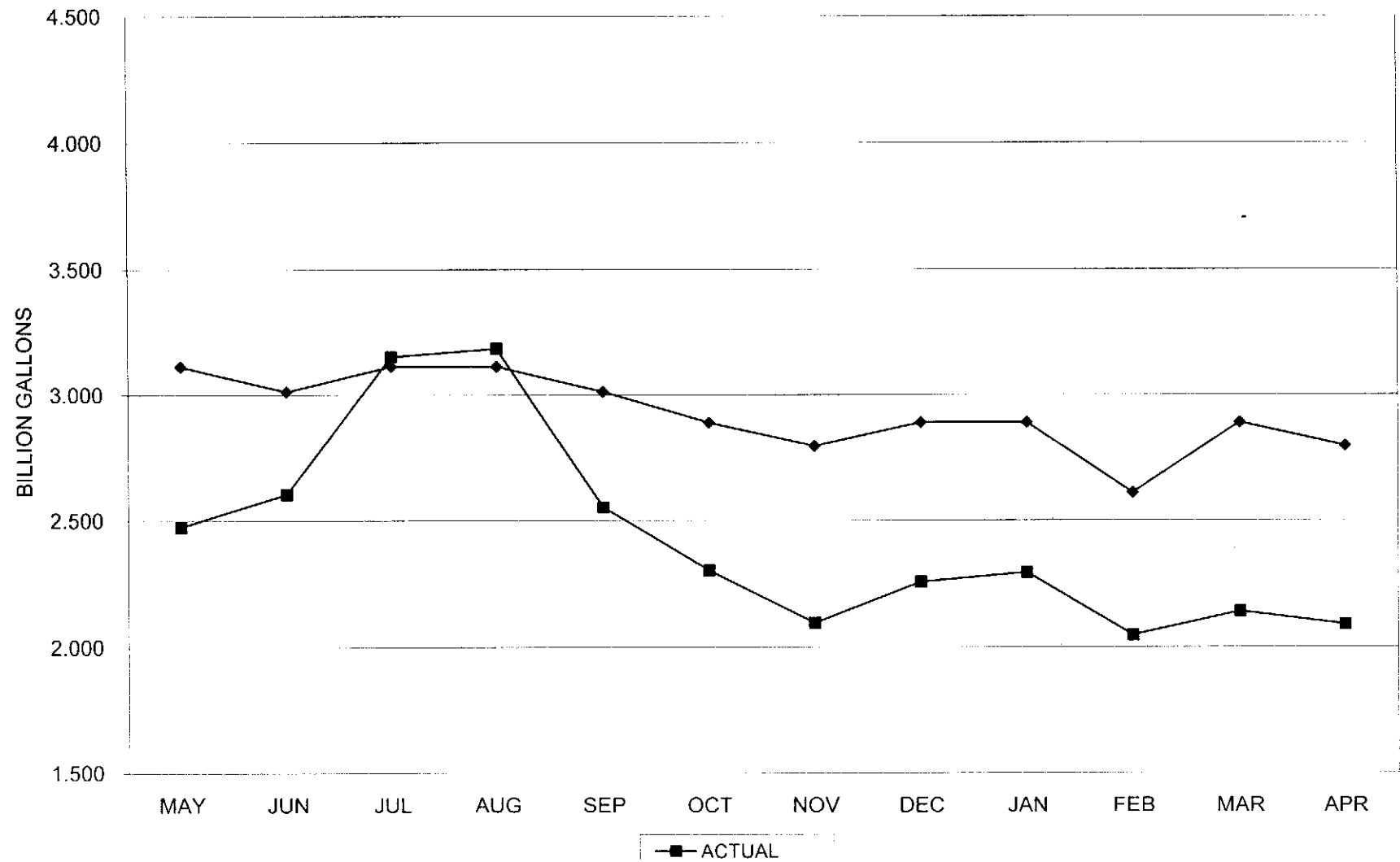
MONTH	SALES TO CUSTOMERS (GALLONS)	PURCHASES FROM CHICAGO (GALLONS)	GALLONS BILLED %	BILLINGS TO CUSTOMERS	BILLINGS FROM CHICAGO	DOCUMENTED COMMISSION WATER USE (2)	DOCUMENTED COMMISSION WATER USE %	TOTAL ACCOUNTED FOR %
May-05	2,751,156,000	2,826,791,957	97.32%	\$3,383,921.88	\$3,669,175.96	7,991,723	0.28%	97.61%
Jun-05	3,775,195,000	3,884,927,612	97.18%	\$4,645,553.10	\$5,042,636.04	6,563,800	0.17%	97.34%
Jul-05	4,078,909,000	4,145,332,157	98.40%	\$5,017,058.07	\$5,380,641.14	6,773,400	0.16%	98.56%
Aug-05	3,498,090,000	3,609,900,000	96.90%	\$4,302,650.70	\$4,685,677.02	8,573,152	0.24%	97.14%
Sep-05	3,202,484,000	3,289,206,394	97.36%	\$3,939,055.32	\$4,269,389.90	6,689,590	0.20%	97.57%
Oct-05	2,545,686,000	2,647,388,860	96.16%	\$3,131,193.78	\$3,436,310.74	6,998,672	0.26%	96.42%
Nov-05	2,238,636,000	2,261,375,216	98.99%	\$2,753,522.28	\$2,935,265.03	5,496,962	0.24%	99.24%
Dec-05	2,362,455,000	2,422,577,673	97.52%	\$2,905,819.65	\$3,144,505.82	5,810,930	0.24%	97.76%
Jan-06	2,241,162,000	2,303,320,263	97.30%	\$2,756,829.26	\$3,063,415.95	4,323,441	0.19%	97.49%
Feb-06	2,033,220,000	2,083,799,323	97.57%	\$2,500,915.68	\$2,771,453.10	3,709,927	0.18%	97.75%
Mar-06	2,189,124,000	2,245,513,008	97.49%	\$2,693,251.86	\$2,986,532.30	5,523,343	0.25%	97.73%
Apr-06	2,286,760,000	2,342,619,023	97.70%	\$2,815,174.80	\$3,115,683.30	3,928,470	0.17%	97.87%
May-06	2,610,813,000	2,692,357,782	96.97%	\$3,237,408.12	\$3,580,835.85	5,227,307	0.19%	97.17%
Jun-06	2,992,447,000	3,070,487,707	97.46%	\$3,710,960.98	\$4,083,748.65	4,407,260	0.14%	97.60%
Jul-06	3,271,454,000	3,360,915,489	97.34%	\$4,056,602.96	\$4,470,017.60	4,330,000	0.13%	97.47%
Aug-06	3,182,143,000	3,278,914,023	97.05%	\$3,945,857.32	\$4,360,955.65	4,157,170	0.13%	97.18%
Sep-06	2,472,175,000	2,539,240,000	97.36%	\$3,065,988.70	\$3,377,189.20	4,242,892	0.17%	97.53%
Oct-06	2,290,903,000	2,358,823,308	97.12%	\$2,840,719.72	\$3,137,235.00	4,540,716	0.19%	97.31%
Nov-06	2,180,207,000	2,227,311,241	97.89%	\$2,703,456.68	\$2,962,323.95	28,850,568	1.30%	99.18%
Dec-06	2,226,395,000	2,288,619,699	97.28%	\$2,760,729.80	\$3,043,864.20	3,979,814	0.17%	97.46%
Jan-07	2,220,804,000	2,280,218,308	97.39%	\$2,753,796.96	\$3,032,690.35	3,980,439	0.17%	97.57%
Feb-07	2,140,510,000	2,201,007,331	97.25%	\$2,654,454.82	\$2,927,339.75	3,710,444	0.17%	97.42%
Mar-07	2,210,108,000	2,255,212,245	98.18%	\$2,741,312.06	\$3,773,865.90	3,891,151	0.17%	98.35%
Apr-07	2,181,740,000	2,251,116,429	96.92%	\$2,705,357.60	\$2,993,984.85	4,352,433	0.19%	97.11%
May-07	2,863,644,000	2,951,900,000	97.01%	\$2,978,988.48	\$3,926,001.00	4,012,875	0.14%	97.15%
Jun-07	3,292,831,000	3,396,024,774	96.96%	\$3,424,545.52	\$4,516,712.95	4,468,064	0.13%	97.09%
Jul-07	3,314,840,000	3,412,423,571	97.14%	\$3,447,433.60	\$4,538,523.35	4,456,650	0.13%	97.27%
Aug-07	2,683,008,000	2,968,379,286	97.19%	\$2,998,328.32	\$3,945,284.45	4,172,900	0.14%	97.33%
Sep-07	2,951,692,000	3,051,690,188	96.73%	\$3,070,294.72	\$4,058,614.95	3,977,217	0.13%	96.86%
Oct-07	2,512,609,400	2,578,045,000	97.46%	\$2,614,883.38	\$3,428,799.85	9,585,389	0.37%	97.83%
Nov-07	2,143,753,000	2,205,810,263	97.19%	\$2,230,952.72	\$2,933,727.65	10,390,297	0.47%	97.66%
Dec-07	2,228,281,000	2,292,016,165	97.22%	\$2,317,412.24	\$3,048,381.50	2,174,944	0.09%	97.31%
Jan-08	2,262,968,000	2,324,208,591	97.37%	\$2,353,486.72	\$3,554,877.04	2,134,597	0.09%	97.46%
Feb-08	2,145,137,000	2,197,527,140	97.62%	\$2,232,195.60	\$3,361,117.76	2,074,217	0.09%	97.71%
Mar-08	2,239,073,000	2,295,015,835	97.56%	\$2,328,635.92	\$3,510,226.72	2,041,001	0.09%	97.65%
Apr-08	2,177,771,000	2,244,319,320	97.03%	\$2,266,101.68	\$3,432,686.40	8,144,629	0.36%	97.40%
May-08	2,474,831,000	2,566,584,008	96.43%	\$2,573,824.24	\$3,925,590.24	4,884,294	0.19%	96.62%
Jun-08	2,604,318,000	2,677,571,376	97.27%	\$2,709,084.64	\$4,095,039.52	1,964,000	0.07%	97.34%
Jul-08	3,152,495,000	3,254,898,777	96.85%	\$3,278,594.80	\$4,978,367.68	2,131,900	0.07%	96.92%
Aug-08	3,184,859,000	3,279,705,181	97.85%	\$3,312,253.36	\$5,015,376.08	2,353,100	0.07%	97.92%
Sep-08	2,552,623,000	2,619,176,751	97.44%	\$2,655,066.48	\$4,006,642.64	2,109,972	0.08%	97.52%
Oct-08	2,302,750,000	2,362,503,982	97.47%	\$2,855,410.00	\$3,613,449.84	7,923,498	0.34%	97.81%
Nov-08	2,096,015,000	2,165,930,363	96.80%	\$2,599,238.12	\$3,311,719.84	2,220,353	0.10%	96.91%
Dec-08	2,256,850,000	2,320,311,736	97.26%	\$2,798,494.00	\$3,548,916.80	2,283,006	0.10%	97.36%
Jan-09	2,293,548,000	2,349,026,333	97.64%	\$2,843,999.52	\$4,131,937.32	2,163,839	0.09%	97.73%
Feb-09	2,048,827,000	2,102,686,263	97.44%	\$2,540,545.48	\$3,696,346.65	1,967,373	0.09%	97.54%
Mar-09	2,141,079,000	2,198,779,067	97.40%	\$2,655,454.08	\$3,864,574.60	5,652,898	0.26%	97.66%
Apr-09	2,090,046,000	2,145,131,399	97.36%	\$2,591,657.04	\$3,773,865.90	2,265,801	0.11%	97.47%
TOTALS (1)	507,525,194,400	522,427,16,950	97.15%	\$660,211,562.87	\$606,886,202.58	535,037,625	0.10%	97.25%

(1) - SINCE MAY 1, 1992

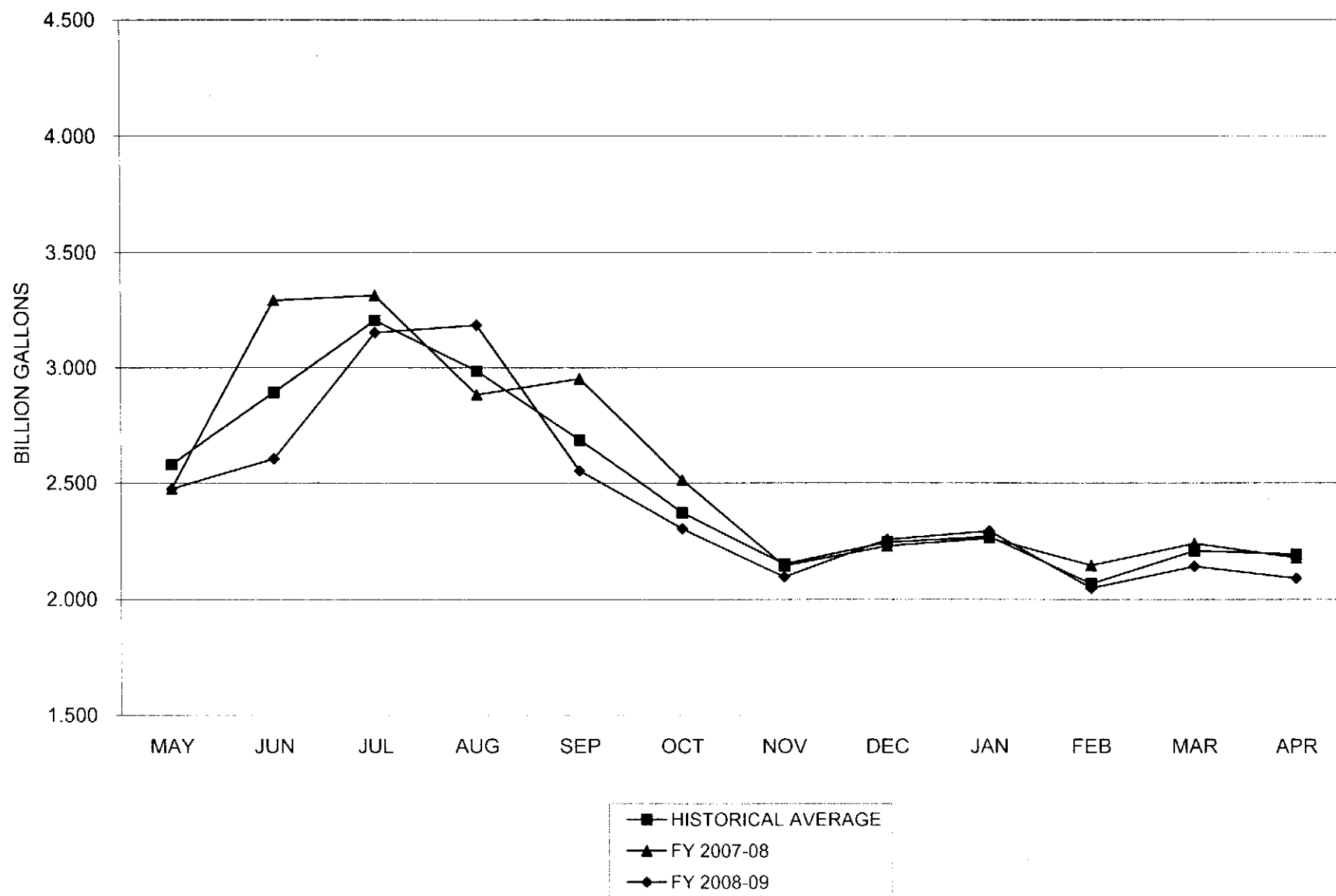
(2) - REPRESENTS DU PAGE PUMP STATION, METER TESTING AND CONSTRUCTION PROJECT USAGE

Operations\Spreadsheets\H2O\SALES.xls

**DU PAGE WATER COMMISSION SALES
FY 2008-09 VS. ALLOCATION**



**DU PAGE WATER COMMISSION SALES
FY 2008-09 & FY 2007-08 VS. HISTORICAL AVERAGE**





DuPage Water Commission MEMORANDUM

TO: Bob Martin
FROM: Chris Bostick
DATE: May 7, 2009

SUBJECT: Office Furnishings – Contract PSD-7/08

The purpose of this memorandum is to follow up on the request made by Commissioner Maio at the January 2009 Engineering Committee meeting regarding the cost to supply office furnishings for the PSD-7 expansion project.

To provide some background, the PSD-7 facility was designed and will be constructed under the U.S. Green Building Council LEED (Leadership in Energy and Environmental Design) certification process. There is a LEED factor applied to the Contract Specifications for office furnishings. The LEED requirement calls for a certain amount of recycled content, demonstrated long term sustainability and manufacturing facilities within 500 miles of our facility (point of final destination).

In December 2008, Commissioner Maio provided Commission Staff with MSRP costs of \$82,193.00 for the specified furnishings and expressed concerns over the aggregate cost and over the cost of the conference table in particular. CDM subsequently contacted a furniture vendor who advised that the wholesale cost for the same furnishings was approximately \$39,975.00 plus overhead and profit.

As the PSD-7/08 contract is a lump sum contract, we received a Schedule of Values from the Contractor which allocated the contract price among the various component parts of the work. The Contractor's Schedule of Values allocates \$39,733.00 to the supply and installation of the specified furnishings. The Contractor has advised that this is a package price from his supply contractor and cannot be further divided into unit prices to determine the cost of individual pieces.

Please advise if you need any additional information at this time.



**WILLIAMS
BROTHERS**
CONSTRUCTION, INC

Letter of Transmittal

Submittal Transmittal No.:
Purchase Order No.:

164
Engineer

To: Camp Dresser & McKee, Inc. (RR)
125 South Wacker Drive, Suite 600
Chicago, IL 60606

Date: 04/17/09

Attn: Rosalie Roa
Phone: 312-346-5000
Fax: 312-346-5228

RE: DuPage Pumping Station
Facility Expansion Project
Elmhurst, IL

Item No.	Submittal Number	No. of Copies	Spec. Section	Specification Description	Submittal	Vendor	Status
1	D-12620-001-A	10	12620	Office Furniture & Accessories	Shop Drawings & Catalog Cuts	Business Office Systems	For Approval
2	S-12620-002-A	10	12620	Office Furniture & Accessories	Business Office Systems Proposal Order Form Highlighted items require selection	Business Office Systems	For Color Selection
3	S-12620-003-A	1 each	12620	Office Furniture & Accessories	Sample Brochures for wood finish & fabric color selections	Business Office Systems	For Color Selection

☒ FOR YOUR APPROVAL AND/OR CORRECTION; RETURN

COPIES

☐ AS REQUESTED

☐ FOR YOUR FILES AND/OR JOB USE

COMMENTS:

There are many selections required regarding wood finishes, fabric/color selections, mesh colors, trim colors. Please refer to the included Proposal Order for with highlighted items that require selection.

C.C. File

Ted Nauman

GENERAL CONTRACTOR P.O. Box 1366 / Peoria, Illinois 61654 / Phone (309) 688-0416 / Fax (309) 688-0891

740 HILLTOP DRIVE, ITASCA, ILLINOIS 60143-1326
PHONE 830.773.7777 FAX 830.773.7733
www.bos.com

A HAWORTH Preferred Dealer

PROPOSAL NUMBER
DWC001 34-341
CUSTOMER PURCHASE ORDER NO

SOLD TO

DUPAGE WATER COMMISSION
600 E. BUTTERFIELD ROAD
ELMHURST, IL 60126

SHIP TO

DUPAGE WATER COMMISSION
600 E. BUTTERFIELD ROAD
ELMHURST, IL 60126

SALESPERSON

JENNIFER RAPPE
DATE
10/27/08
PAGE
1

Item #	Quantity	Model Number	Description	Unit Cost	Total Cost
--------	----------	--------------	-------------	-----------	------------

IMPORT: \\tsclient\c\pumpbid.sif
DUPAGE WATER COMMISSION - PUMPING STATION BID
HAWORTH FURNITURE
DUPAGE WATER COMMISSION PO#
REVISED 10/27/08 -PER ADDENDUM #2

THE FOLLOWING ARE HAWORTH PRODUCTS
PER BID SPECIFICATIONS, ADDENDUM #1,
SECTION 12620 -OFFICE
FURNITURE.
PROPOSAL REVISED 10/27/08 TO REFLECT
QUANTITY CHANGES OF FURNITURE PER BID
ADDENDUM #2 RECEIVED 10/27/08.

1	4.00	YDRF-3066-C232	RECTANGLE TOP DESK, 30X66"		
		(C232)	ARC, ELLP, ST, 12/12, 6/6/12		
		, VD-	VENEER - CHERRY		
		~	UNDECIDED COLOR		
		, TR-	SURFACE 2		
		~	UNDECIDED COLOR		
2	4.00	SZT-22-411MA1	ZODY TASK CHAIR, FABRIC SEAT/FABRIC BACK		
		(411MA1)	HA, LMB ADJ, PNU/BS, FM/AJ, ST/HRD		
		, NI-	CHR FAB - ZINGER GRADE A		
		~	UNDECIDED COLOR		
		, MA-	ZODY MESH		
		~	UNDECIDED COLOR		
		, NI-	CHR FAB - ZINGER GRADE A		
		~	UNDECIDED COLOR		
		, TR-	SURFACE 4		
		~	UNDECIDED COLOR		
		(2)	TRIM SURFACE 5		
		, TR-	SURFACE 5		
		~	UNDECIDED COLOR		

Where great offices begin.

THIS DOCUMENT IS SUBJECT TO THE TERMS AND CONDITIONS APPEARING ON THE ATTACHED DOCUMENT

ORIGINAL PROPOSAL

740 HILLTOP DRIVE, ITASCA, ILLINOIS 60143-1326
 PHONE 630.773.7777 FAX 630.773.7733
 www.bos.com

PROPOSAL NUMBER
 DWC001 34-341
 CUSTOMER PURCHASE ORDER NO

SOLD TO

DUPAGE WATER COMMISSION
 600 E. BUTTERFIELD ROAD
 ELMHURST, IL 60126

SHPTO

DUPAGE WATER COMMISSION
 600 E. BUTTERFIELD ROAD
 ELMHURST, IL 60126

SALESPERSON

JENNIFER RAPPE
 DATE
 10/27/08
 PAGE
 2

Item #	Quantity	Model Number	Description	Unit Cost	Total Cost
3	4.00	YZYN-2466-C2T	FULL STORAGE CREDENZA, 24X66"		
		(C2T)	ARC, ELLP FULL, WD		
		, VD-	VENEER - CHERRY		
		~	UNDECIDED COLOR		
		, TR-	SURFACE 2		
		~	UNDECIDED COLOR		
4	8.00	4243-00	COMPOSITES STACKING CHAIR OPEN ARMS, SLAT BACK		
		()	STANDARD VERSION		
		, NI-	CHR FAB - ZINGER GRADE A		
		~	UNDECIDED COLOR		
		, M2-	MAPLE-OPEN LACQUER (MUELLER)		
		~	UNDECIDED COLOR		
			TOTAL FURNITURE SPECIFIED FOR OFFICES 105, 106, 107 & 108		
5	1.00	ABCB-1860-2	VAR, BOAT TBL, 60X216		
		(2)	MODERN EDGE		
		, A2-	ANEGRE-OPEN PORE LACQUER		
		~	UNDECIDED COLOR		
6	1.00	ABBD-18BO	VAR, D BASE, FOR 216, BOAT		
		, A2	ANEGRE-OPEN PORE LACQUER		
		~	UNDECIDED COLOR		
7	12.00	SZT-20-112MA1	ZODY TASK CHAIR, FABRIC SEAT/MESH BACK		
		(112MA1)	FA, LMB ADJ, PNU BK, FM/AJ, ST/HRD		
		, NI	CHR FAB - ZINGER GRADE A		
		~	UNDECIDED COLOR		
		, MA-	ZODY MESH		
		~	UNDECIDED COLOR		
			CONTINUED...		

business office systems

PROPOSAL

740 HILLTOP DRIVE, ITASCA, ILLINOIS 60143-1326
 PHONE 630.773.7777 FAX 630.773.7733
 www.bos.com

A HAWORTH Preferred Dealer

PROPOSAL NUMBER
 DWC001 34-341
 CUSTOMER PURCHASE ORDER NO

SOLD TO

DUPAGE WATER COMMISSION
 600 E. BUTTERFIELD ROAD
 ELMHURST, IL 60126

SHIP TO

DUPAGE WATER COMMISSION
 600 E. BUTTERFIELD ROAD
 ELMHURST, IL 60126

SALESPERSON

JENNIFER RAPPE
 DATE

10/27/08
 PAGE

3

Item #	Quantity	Model Number	Description	Unit Cost	Total Cost
--------	----------	--------------	-------------	-----------	------------

, TR- SURFACE 3
 ~ UNDECIDED COLOR
 (2) TRIM SURFACE 4
 , TR- SURFACE 4
 ~ UNDECIDED COLOR

TOTAL FURNITURE SPECIFIED FOR
 CONFERENCE ROOM 102

8 1.00 NOTE

FABRICS & FINISHES
 ALL FABRICS AND FINISHES SPECIFIED AS
 A GRADE "A".
 FABRIC AND FINISHES TO BE CONFIRMED
 PRIOR TO ORDER APPROVAL.

9 1.00 COMMENT:

U.S COMMUNITIES PURCHASE ORDER
 INSTRUCTIONS

[NOTES:*,

[Notes:]=====

ADDRESS PURCHASE ORDER TO:
 HAWORTH, INC.
 C/O BUSINESS OFFICE SYSTEMS
 ONE HAWORTH CENTER
 HOLLAND, MI 49423

PLEASE REFERENCE CONTRACT#
 N051017
 Tax I.D.#:
 DUNS #:

10 1.00 FREIGHT

FREIGHT FOR HAWORTH IS INCLUDED.

11 1.00 LABOR

~~TO RECEIVE, DELIVER AND INSTALL ALL~~
~~PRODUCTS DURING NORMAL WORKING~~
~~HOURS.~~
~~LABOR TO RECEIVE ALL NEW PRODUCTS,~~
~~DELIVERY AND INSTALLATION OF ALL NEW~~

CONTINUED...

Where great offices begin.

THIS DOCUMENT IS SUBJECT TO THE TERMS AND CONDITIONS APPEARING ON THE ATTACHED DOCUMENT

ORIGINAL PROPOSAL

business office systems

PROPOSAL

740 HILLTOP DRIVE, ITASCA, ILLINOIS 60143-1326
PHONE 630.773.7777 FAX 630.773.7733
www.bos.com

A HAWORTH Preferred Dealer

PROPOSAL NUMBER
DWC001 34-341
CUSTOMER PURCHASE ORDER NO

SOLD TO

DUPAGE WATER COMMISSION
600 E. BUTTERFIELD ROAD
ELMHURST, IL 60126

SHIP TO

DUPAGE WATER COMMISSION
600 E. BUTTERFIELD ROAD
ELMHURST, IL 60126

SALESPERSON
JENNIFER RAPPE
DATE
10/27/08
PAGE
4

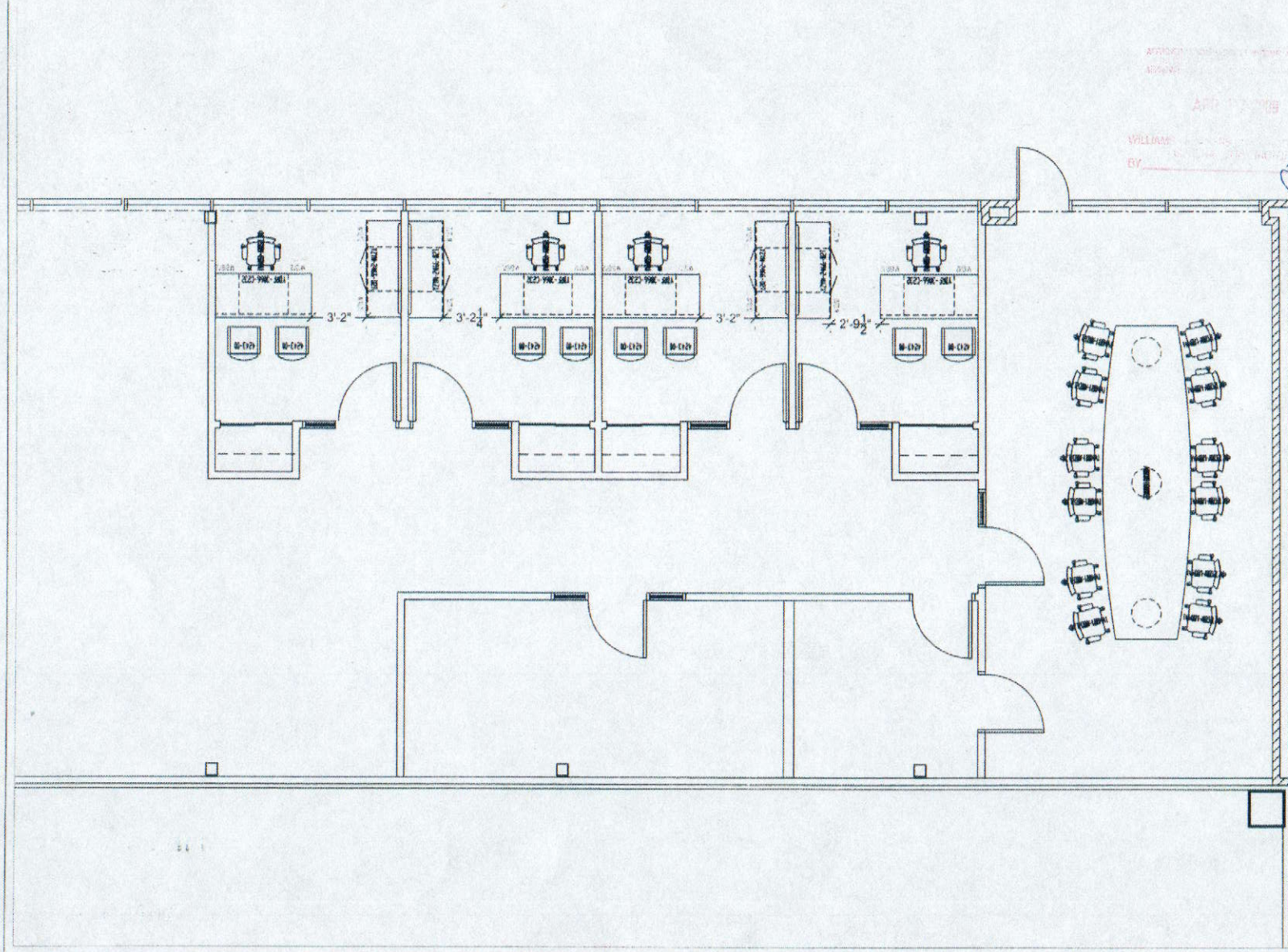
Item #	Quantity	Model Number	Description	Unit Cost	Total Cost
PRODUCTS ONLY DURING NORMAL WORKING HOURS. QUOTE IS AN ESTIMATE ACTUAL LABOR HOURS TO BE INVOICED. ADDITIONAL LABOR HOURS ADDED FOR SECURITY PROCEDURES INTO FACILITY.					
12	1.00	PRICING	HAWORTH PRICING BASED UPON U.S. COMMUNITIES PROGRAM SOLE SOURCE PRICING IN THE CONTINENTAL UNITED STATES.	0.00	0.00
13	1.00	TAX	DUPAGE WATER COMMISSION FEDERAL ID# WILL NEED TO BE SUPPLIED AT TIME OF ORDER ENTRY.	0.00	0.00

MATERIAL \$ 38,733.⁸⁹

Where great offices begin.

THIS DOCUMENT IS SUBJECT TO THE TERMS AND CONDITIONS APPEARING ON THE ATTACHED DOCUMENT

ORIGINAL PROPOSAL



APPROVED FOR CONSTRUCTION BY: *[Signature]*
 WILLIAM J. KOTH
 BY: *[Signature]*

business office systems

HEADQUARTERS:
 740 HILLTOP DRIVE
 ITASCA, IL 60143
 312.773.7777

CHICAGO LOCATION:
 444 N. ORLANDO, SUITE 200
 CHICAGO, IL 60610
 312.470.5035

THIS PRINT IS THE PROPERTY OF BUSINESS OFFICE SYSTEMS, INC. AND IS LOANED IN CONFIDENCE AND SUBJECT TO RETURN UPON REQUEST. COPIES MAY NOT BE MADE OR PARTS OF THIS PRINT REPRODUCED IN ANY MANNER WITHOUT WRITTEN CONSENT FROM BOS. WRITTEN DIMENSIONS HAVE PRECEDENCE OVER SCALED DIMENSIONS. CONTRACTORS WILL VERIFY AND BE RESPONSIBLE FOR ALL DIMENSIONS AND CONDITIONS ON THE JOB. THIS OFFICE MUST BE NOTIFIED OF ANY VARIATIONS FROM THE DIMENSIONS AND ALL OF THE TERMS AND CONDITIONS SHOWN BY THIS PRINT.

©2008 Business Office Systems, Inc.

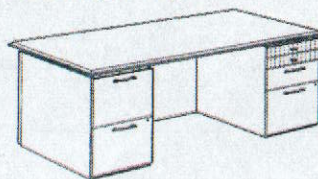
FURNITURE PLAN
 SPECIFICATION FLOOR NUMBER:
 PROJECT: DUPAGE PUMPING STATION BUS OFFICE
 FIRM FILE NAME:
 D#:
 PROJECT SERIAL SERVICES NUMBER:
 3/16" = 1'-0"
 SCALE:
 21 October 2008
 DATE:
 ABIGAIL KOTH
 DRAWN BY:
 JENNIFER RAPPE
 CHECKED BY:

DUPAGE PUMPING STATION

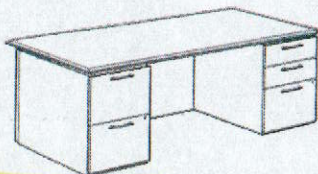
REVISIONS: DATE/TIME/DRAWN BY:
 10/21/08 ISSUED FOR REVIEW: JK
 1
 2
 3
 4
 5
 6
 7
 8
 9
 10
 11
 12
 13
 14
 15
 16
 17
 18
 19
 20
 21
 22
 23
 24
 25
 26
 27
 28
 29
 30
 31
 32
 33
 34
 35
 36
 37
 38
 39
 40
 41
 42
 43
 44
 45
 46
 47
 48
 49
 50
 51
 52
 53
 54
 55
 56
 57
 58
 59
 60
 61
 62
 63
 64
 65
 66
 67
 68
 69
 70
 71
 72
 73
 74
 75
 76
 77
 78
 79
 80
 81
 82
 83
 84
 85
 86
 87
 88
 89
 90
 91
 92
 93
 94
 95
 96
 97
 98
 99
 100

APPROVED BY:
 DATE:
 SHEET NUMBER:
 1 OF 1

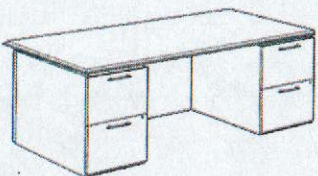
Double Pedestal Desk, Rectangle Top



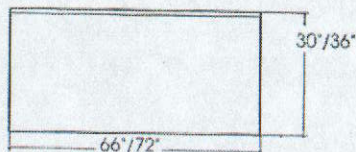
YDRF-3066-C231



YDRF-3066-C232



YDRF-3066-C233



Height	Depth	Width	Number	1	2	3	4	Wood Finish Group	1	2	3	4
29"(737mm)	30"(762mm)	66"(1676mm)	YDRF-3066-					\$3410	\$3589	\$3768	\$3936	
	36"(914mm)	72"(1829mm)	YDRF-3672-					3594	3783	3971	4151	

Features

- Standard price includes modular/steel drawers.
- Modular/steel and wood drawers cannot be specified in same unit.
- Sloped profile edge on visitor's side; flush profile edge on all other sides.
- Pedestal on 66"(1676mm)-wide desk is 16 1/2"(415mm) wide.
- Pedestal on 72"(1829mm)-wide desk is 19"(481mm) wide to accommodate legal width filing.
- Full-height recessed modesty panel with an elliptical opening in top center for routing of power cords and communication cables; modesty panel is detachable for accessing wall power outlets and voice/data access ports.
- Desk top flush on visitor's side on 30"(762mm)-deep desk, 6"(152mm) overhang on 36"(914mm)-deep desk.
- Shipped unassembled; drawer pulls are factory installed.

To Order, Specify:

1) Product number, including:

1 Edge Option:

C Wood Arc

D Wood Reed

2 Box/File Drawer Pull Option:

1 Channel

2 Ellipse

3 Left Pedestal Modular/Steel Drawers Option:

For 66"-wide desks / 16 1/2"-wide pedestals:

1 Project/Project/Box/File, add \$190 list

2 Box/Box/File

3 File/File

For 72"-wide desks / 19"-wide pedestals:

4 Project/Project/Box/File, add \$190 list

5 Box/Box/File

6 File/File

4 Right Pedestal Modular/Steel Drawers Option:

For 66"-wide desks / 16 1/2"-wide pedestals:

1 Project/Project/Box/File, add \$190 list

2 Box/Box/File

Zody**TASK Chair with Height Adjustable Arms**

SZT-20-402MA1

Dimensions*

*SH: 16-21"
(406mm-533mm)
H: 38-43"(965mm-1092mm)
D: 29"(737mm)
W: 29"(737mm)
*SW: 19 1/4"(489mm)
*AH: 6.8-10.8"
(173mm-274mm)
*SD: 16-19"(406mm-483mm)

Low position seat height:
14-17"(356mm-432mm)

* All measurements
taken with the
BIFMA chair
measuring device.

Features

- Back: Soft mesh only or mesh back with upholstered back jacket.
- Seat: Standard upholstered with foam or optional foam with Technogel® Soft Lite gel insert.
- Seat Type: Standard adjustable [3"(76mm) range] or optional fixed.
- Base: Standard painted five-star aluminum base or optional polished aluminum.
- Arms: Height-adjustable with soft arm caps.
- Mechanism: Balanced 3-point tilt; standard tilt tension.
- Height adjustment: Pneumatic or low-position pneumatic.
- Optional Back Stop: Tilt stop in 6 positions.
- Optional Forward Tilt: 5 degrees downward from initial position.
- Optional Back Stop with Forward Tilt
- Optional Adjustable Lumbar: 4"(102mm) height adjustment, flexible support.
- Casters: Standard with hard casters; optional soft casters.
- COM yardage / COL square footage:
Mesh back model: 0.75 / 20
Mesh back/upholstered back jacket: 1.5 / 40
- Available on RUSH.

NOTE: When specifying fabric or leather back jacket; must also specify mesh surface color for outside back.

For different fabric grades on seat and upholstered back jacket, pricing will be determined by the sum of the upcharges of the selected jacket fabric grades (i.e. when choosing a Grade B fabric for the seat and a Grade D for the back, the final price will reflect the upcharge for a Grade B seat plus the upcharge for a Grade D back jacket.)

To Order with Mesh Back; Specify:

- 1) Product number.
- 2) Fabric surface and color (seat).
- 3) Mesh surface and color (back).
- 4) Trim color for frame/arm caps.
- 5) Trim color for base/arms.
(Add \$155 for polished aluminum.)

To Order with Fabric or Leather Upholstered Back Jacket; Specify:

- 1) Product number.
- 2) Fabric surface and color (seat).
- 3) Mesh surface color (back).
- 4) Fabric surface and color (back jacket).
- 5) Trim color for frame/arm caps.
- 6) Trim color for base/arms.
(Add \$155 for polished aluminum.)

Leather Seat with Mesh Back:

Change fourth digit in product number to 1; fifth digit to 0.

Example: SZT-10-402MA1

Leather Seat with Leather Upholstered Back Jacket:

Change fourth digit in product number to 1; fifth digit to 1.

Example: SZT-11-402MA1

Upholstered Foam Seat	Adjustments	Number	Fabric Grade								Leather Grade 1
			A	B	C	D	E	F	G	H	
Lumbar Adjustment											
Mesh	Pneumatic	SZT-20-412MA1	\$ 989	\$1017	\$1047	\$1061	\$1073	\$1099	\$1123	\$1189	\$1234
	Back Stop	SZT-20-411MA1	1051	1079	1109	1123	1135	1161	1185	1251	1296
	Forward Tilt	SZT-20-413MA1	1051	1079	1109	1123	1135	1161	1185	1251	1296
	Back Stop/ Forward Tilt	SZT-20-414MA1	1071	1099	1129	1143	1155	1181	1205	1271	1316
Upholstered Back Jacket	Pneumatic	SZT-22-412MA1	\$1081	\$1137	\$1197	\$1225	\$1249	\$1301	\$1349	\$1481	\$1571
	Back Stop	SZT-22-411MA1	1143	1199	1259	1287	1311	1363	1411	1543	1633
	Forward Tilt	SZT-22-413MA1	1143	1199	1259	1287	1311	1363	1411	1543	1633
	Back Stop/ Forward Tilt	SZT-22-414MA1	1163	1219	1279	1307	1331	1383	1431	1563	1653

The following options require modification of the product number.

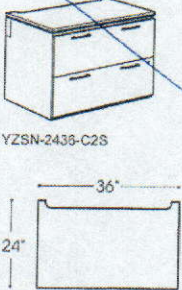
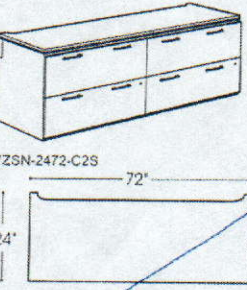
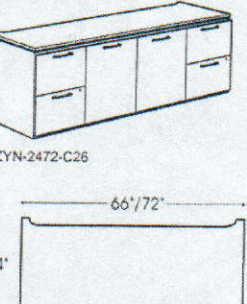
- Soft casters To specify, change the 11th digit from a 1 (hard caster) to a 2 (soft caster); **Example:** SZT-20-402MA2
- Low position pneumatic To specify, change the 11th digit from a 1 to a 3 (hard caster) or from a 2 to a 4 (soft caster);
Examples: SZT-20-402MA3 is a low base with hard casters
SZT-20-402MA4 is a low base with soft casters
- Fixed seat **NOTE:** Polished aluminum trim not available with this option.
- CAL 133 To specify, change the 10th digit from A to X; **Example:** SZT-20-402MX1
To specify, add -F to the end of the product number. **Example:** SZT-20-401MA1-F (add \$113 list)

NOTE: CAL 133 is available on chairs with black frame and foam seat with or without the Lumbar option.
CAL 133 is not available on chairs with PAL back system.

Vancouver

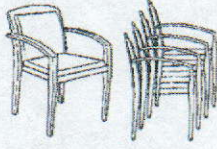
Credenzas

F3

	Height	Depth	Width	Number	Wood Finish Group				
					1	2	3	4	
Credenza with Two Lateral Files	29"(737mm)	24"(610mm)	36"(914mm)	YZSN-2436-		\$2030	\$2136	\$2243	\$2375
									
YZSN-2436-C2S									
Features	<ul style="list-style-type: none">Standard price includes steel drawers.Flush profile edge.Designed for placement against a wall or systems furniture panel.Locks are located in lower file drawer.Power and Cable Management (PCM) channel allows for pass-through only of extended power connectors.Recessed Work Rail along the back edge of top surface accommodates separately-specified Power Slider, see Vancouver Electrical Accessories.Credenza can be positioned with a return or shell for continuation of power and communications distribution.Shipped unassembled; drawer pulls are factory installed.								
To Order, Specify:	<ol style="list-style-type: none">Product number, including:<ol style="list-style-type: none">Edge Option:<ul style="list-style-type: none">C Wood ArcD Wood ReedLateral File Drawer Pull Option:<ul style="list-style-type: none">1 Channel2 EllipseDrawer Construction Option:<ul style="list-style-type: none">7 SteelW Wood, add \$450 listWood finish color.Drawer pull finish color.								
Credenza with Four Lateral Files	29"(737mm)	24"(610mm)	72"(1829mm)	YZSN-2472-		\$4058	\$4270	\$4483	\$4748
									
YZSN-2472-C2S									
Features	<ul style="list-style-type: none">Standard price includes steel drawers.Flush profile edge.Designed for placement against a wall or systems furniture panel.Locks are located in each lower file drawer.Power and Cable Management (PCM) channel allows for pass-through only of extended power connectors.Recessed Work Rail along the back edge of top surface accommodates separately-specified Power Slider, see Vancouver Electrical Accessories.Credenza can be positioned with a return or shell for continuation of power and communications distribution.Shipped unassembled; drawer pulls are factory installed.								
To Order, Specify:	<ol style="list-style-type: none">Product number, including:<ol style="list-style-type: none">Edge Option:<ul style="list-style-type: none">C Wood ArcD Wood ReedLateral File Drawer Pull Option:<ul style="list-style-type: none">1 Channel2 EllipseDrawer Construction Option:<ul style="list-style-type: none">7 SteelW Wood, add \$900 listWood finish color.Drawer pull finish color.								
Full Storage Credenza	29"(737mm)	24"(610mm)	66"(1676mm)	YZYN-2466-		\$4430	\$4662	\$4895	\$5184
									
YZYN-2472-C26									
Features	<ul style="list-style-type: none">Standard price includes steel drawers.Flush profile edge.Designed for placement against a wall or systems furniture panel.Pedestal configuration: Two file/file drawer pedestals and two-door center storage.Locks are located in each lower file drawer.Interior of two-door center storage is equipped with one shelf adjustable in 1 1/4"(32mm) increments.Power and Cable Management (PCM) channel allows for pass-through only of extended power connectors.Recessed Work Rail along the back edge of top surface accommodates separately-specified Power Slider, see Vancouver Electrical Accessories.Credenza can be positioned with a return or shell for continuation of power and communications distribution.Shipped unassembled; drawer pulls are factory installed.Center Storage Interior Dimensions:								
To Order, Specify:	<ol style="list-style-type: none">Product number, including:<ol style="list-style-type: none">Edge Option:<ul style="list-style-type: none">C Wood ArcD Wood ReedLateral File Drawer Pull Option:<ul style="list-style-type: none">1 Channel2 EllipseDrawer Construction Option:<ul style="list-style-type: none">6 SteelT Wood, add \$450 listWood finish color.Drawer pull finish color.								
	Height	Depth	Width						
30" Width	24 3/4"(629mm)	22 1/8"(563mm)	25 3/4"(654mm)						
36" Width	24 3/4"(629mm)	22 1/8"(563mm)	34 1/2"(876mm)						

Composites Seating Series

Guest/Occasional Seating

		Base/Frame	Number	Fabric Grade								Leather Grade 1
				A	B	C	D	E	F	G	H	
Stacking Chair, Arc Arm, Upholstered Back  4043-00	Dimensions SH: 18 1/2" (470mm) H: 33 5/8" (854mm) D: 21 3/4" (552mm) W: 22 1/4" (565mm) SW: 18" (457mm) SD: 18" (457mm) AH: 25 7/8" (657mm)	Maple	4043-00	\$888	\$919	\$947	\$994	\$1022	\$1060	\$1096	\$1198	\$1494
		Features <ul style="list-style-type: none"> • Open arms. • Upholstered seat and back. • Maple hardwood frame. Seat frame rails are mortise and tenoned, cross locked with dowels, reinforced with corner blocks. • Seat is HR foam over a webbed panel. • The upholstered back frame insert is webbed and padded with foam. • Recommended stacking limit is 4 chairs high. • Available with fire-retardant construction to comply with California Bulletin #133. • COM yardage: 1.13 • COL square footage: 20.3 										

To Order, Specify:

- 1) Product number.
- 2) Fabric surface and color.
- 3) Frame finish color.

Fire Retardant Option:

Add -F to the product number, and add \$91 list.

		Base/Frame	Number	Fabric Grade								Leather Grade 1
				A	B	C	D	E	F	G	H	
Stacking Chair, Arc Arm, Slat Back  4243-00	Dimensions SH: 18 1/2" (470mm) H: 33 5/8" (854mm) D: 21 3/4" (552mm) W: 22 1/4" (565mm) SW: 18" (457mm) SD: 18" (457mm) AH: 25 7/8" (657mm)	Maple	4243-00	\$888	\$906	\$914	\$935	\$947	\$988	\$1010	\$1069	\$1159
		Features <ul style="list-style-type: none"> • Open arms. • Upholstered seat. • Maple hardwood frame. Seat frame rails are mortise and tenoned, cross locked with dowels, reinforced with corner blocks. • Seat is HR foam over a webbed panel. • Recommended stacking limit is 4 chairs high. • Available with fire-retardant construction to comply with California Bulletin #133. • COM yardage: .66 • COL square footage: 12.0 										

To Order, Specify:

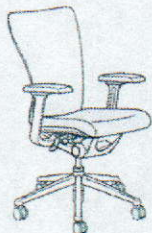
- 1) Product number.
- 2) Fabric surface and color.
- 3) Frame finish color.

Fire Retardant Option:

Add -F to the product number, and add \$91 list.

Zody

TASK Chair with Fixed Arms



SZT-20-102MA1

Dimensions*

*SH: 16-21"
(406mm-533mm)
H: 38-43"(965mm-1092mm)
D: 29"(737mm)
W: 29"(737mm)
*SW: 19 1/4"(489mm)
*AH: 9"(229mm)
*SD: 16-19"(406mm-483mm)
Low position seat height:
14-17"(356mm-432mm)

* All measurements
taken with the
BIFMA chair
measuring device.

Features

- Back: Soft mesh only or mesh back with upholstered back jacket.
 - Seat: Standard upholstered with foam or optional foam with Technogel® Soft Lite gel insert.
 - Seat Type: Standard adjustable [3"(76mm) range] or optional fixed.
 - Base: Standard painted five-star aluminum base or optional polished aluminum.
 - Arms: Fixed with soft arm caps.
 - Mechanism: Balanced 3-point tilt; standard tilt tension.
 - Height adjustment: Pneumatic or low-position pneumatic.
 - Optional Back Stop: Tilt stop in 6 positions.
 - Optional Forward Tilt: 5 degrees downward from initial position.
 - Optional Back Stop with Forward Tilt
 - Optional Adjustable Lumbar: 4"(102mm) height adjustment, flexible support.
 - Casters: Standard with hard casters; optional soft casters.
 - COM yardage / COL square footage:
Mesh back model: 0.75 / 20
Mesh back/upholstered back jacket: 1.5 / 40
- Available on RUSH.

NOTE: When specifying fabric or leather back jacket; must also specify mesh surface color for outside back.

For different fabric grades on seat and upholstered back jacket, pricing will be determined by the sum of the upcharges of the selected jacket fabric grades (i.e. when choosing a Grade B fabric for the seat and a Grade D for the back, the final price will reflect the upcharge for a Grade B seat plus the upcharge for a Grade D back jacket.)

To Order with Mesh Back; Specify:

- 1) Product number.
- 2) Fabric surface and color (seat).
- 3) Mesh surface and color (back).
- 4) Trim color for frame/arm caps.
- 5) Trim color for base/arms.
(Add \$155 for polished aluminum.)

To Order with Fabric or Leather Upholstered Back Jacket; Specify:

- 1) Product number.
- 2) Fabric surface and color (seat).
- 3) Mesh surface color (back).
- 4) Fabric surface and color (back jacket).
- 5) Trim color for frame/arm caps.
- 6) Trim color for base/arms.
(Add \$155 for polished aluminum.)

Leather Seat with Mesh Back:

Change fourth digit in product number to 1; fifth digit to 0.

Example: SZT-10-102MA1

Leather Seat with Leather Upholstered Back Jacket:

Change fourth digit in product number to 1; fifth digit to 1.

Example: SZT-11-102MA1

Upholstered Foam Seat	Adjustments	Number	Fabric Grade								Leather Grade 1	
			A	B	C	D	E	F	G	H		
Lumbar Adjustment												
Mesh Back	Pneumatic	SZT-20-112MA1	\$ 927	\$ 955	\$ 985	\$ 999	\$1011	\$1037	\$1061	\$1127	\$1172	
	Back Stop	SZT-20-111MA1	989	1017	1047	1061	1073	1099	1123	1189	1234	
	Forward Tilt	SZT-20-113MA1	989	1017	1047	1061	1073	1099	1123	1189	1234	
	Back Stop/ Forward Tilt	SZT-20-114MA1	1009	1037	1067	1081	1093	1119	1143	1209	1254	

The following options require modification of the product number.

Soft casters

Low position pneumatic

To specify, change the 11th digit from a 1 (hard caster) to a 2 (soft caster); **Example:** SZT-20-102MA2

To specify, change the 11th digit from a 1 to a 3 (hard caster) or from a 2 to a 4 (soft caster);

Examples: SZT-20-102MA3 is a low base with hard casters

SZT-20-102MA4 is a low base with soft casters

NOTE: Polished aluminum trim not available with this option.

To specify, change the 10th digit from A to X; **Example:** SZT-20-102MX1


To specify, add -F to the end of the product number. **Example:** SZT-22-101MA1-F (add \$113 list)

Fixed seat

CAL 133

NOTE: CAL 133 is available on chairs with black frame and foam seat with or without the Lumbar option.
CAL 133 is not available on chairs with PAL back system.

Varia Table Tops

	Size	No. of Sections	Seating Capacity	Power Cut-Out Option	Number ①	Wood Finish Group 3
Round  ABCR	36"(914mm)	1	3	N/A	ABCR-36-	\$2376
	42"(1067mm)	1	4	N/A	ABCR-42-	3743
	48"(1219mm)	1	5	N/A	ABCR-48-	3956
	60"(1524mm)	1	7	N/A	ABCR-60-	4445

Features

- Available with Anegre veneer with Alder edge.
- Bases ordered separately.


To Order, Specify:

1) Product number, including:

① Edge Detail:

- 1 Classic
- 2 Modern
- 4 Traditional

2) Wood finish.

Boat  ABCB	72" x 42"/30"(1829mm x 1067mm/762mm)	1	6	S	ABCB-7242-	\$ 4428
	96" x 48"/32"(2438mm x 1219mm/813mm)	1	8	S	ABCB-9648-	6206
	120" x 48"/32"(3048mm x 1219mm/813mm)	1	10	S	ABCB-1048-	6729
	144" x 48"/32"(3658mm x 1219mm/813mm)	2	12	D	ABCB-1248-	8759
	168" x 60"/42"(4267mm x 1524mm/1067mm)	4	12-14	D	ABCB-1460-	14586
	192" x 60"/42"(4877mm x 1524mm/1067mm)	4	14	D	ABCB-1660-	17777
	216" x 60"/42"(5486mm x 1524mm/1067mm)	5	16	D	ABCB-1860-	20016
	240" x 60"/42"(6096mm x 1524mm/1067mm)	5	18	D	ABCB-2060-	22096

NOTE:

Order separately specified flip top units and cable management.

Features

- Available with Anegre veneer with Alder edge.
- Bases ordered separately.

Flip Top Unit Cut-Out Option:

Specification of Flip Top Unit Cut-Out requires modification of product number and price. Cut-out(s) will be centered between bases.

One cut-out, add -S to end of product number and add \$126 list.

Two cut-outs, add -D to end of product number and add \$251 list.

Example: ABCB-7242-1S.

To Order, Specify:

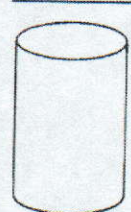
1) Product number, including:

① Edge Detail:

- 1 Classic
- 2 Modern
- 4 Traditional

2) Wood finish.

Varia Cylinder Table Bases



ABBD

Top Shape	Top Size	Base Quantity and Size	Number	Wood Finish Group 3
Round	36" (914mm)	1-18" (457mm)	ABBD-36RO	\$1501
	42" (1067mm)	1-18" (457mm)	ABBD-42RO	1501
	48" (1219mm)	1-24" (610mm)	ABBD-48RO	1985
	60" (1524mm)	1-24" (610mm)	ABBD-60RO	1985
Rectangle	72" x 42" (1829mm x 1067mm)	2-18" (457mm)	ABBD-72RE	\$3016
	96" x 48" (2438mm x 1219mm)	2-18" (457mm)	ABBD-96RE	3016
	120" x 48" (3048mm x 1219mm)	2-18" (457mm)	ABBD-10RE	3016
	144" x 48" (3658mm x 1219mm)	3-18" (457mm)	ABBD-12RE	4279
	168" x 60" (4267mm x 1524mm)	3-24" (610mm)	ABBD-14RE	5840
	192" x 60" (4877mm x 1524mm)	3-24" (610mm)	ABBD-16RE	5840
	216" x 60" (5486mm x 1524mm)	3-24" (610mm)	ABBD-18RE	5840
	240" x 60" (6096mm x 1524mm)	3-24" (610mm)	ABBD-20RE	5840
Boat	72" x 42" (1829mm x 1067mm)	2-18" (457mm)	ABBD-72BO	\$3016
	96" x 48" (2438mm x 1219mm)	2-18" (457mm)	ABBD-96BO	3016
	120" x 48" (3048mm x 1219mm)	2-18" (457mm)	ABBD-10BO	3016
	144" x 48" (3658mm x 1219mm)	3-18" (457mm)	ABBD-12BO	4279
	168" x 60" (4267mm x 1524mm)	3-24" (610mm)	ABBD-14BO	5840
	192" x 60" (4877mm x 1524mm)	3-24" (610mm)	ABBD-16BO	5840
	216" x 60" (5486mm x 1524mm)	3-24" (610mm)	ABBD-18BO	5840
	240" x 60" (6096mm x 1524mm)	3-24" (610mm)	ABBD-20BO	5840
Racetrack	72" x 42" (1829mm x 1067mm)	2-18" (457mm)	ABBD-72RT	\$3016
	96" x 48" (2438mm x 1219mm)	2-18" (457mm)	ABBD-96RT	3016
	120" x 48" (3048mm x 1219mm)	2-18" (457mm)	ABBD-10RT	3016
	144" x 48" (3658mm x 1219mm)	3-18" (457mm)	ABBD-12RT	4279
	168" x 60" (4267mm x 1524mm)	3-24" (610mm)	ABBD-14RT	5840
	192" x 60" (4877mm x 1524mm)	3-24" (610mm)	ABBD-16RT	5840
	216" x 60" (5486mm x 1524mm)	3-24" (610mm)	ABBD-18RT	5840
	240" x 60" (6096mm x 1524mm)	3-24" (610mm)	ABBD-20RT	5840

Features

- Laminated plywood with Anegre veneers.
- Each base ships with two 34 pound cement blocks installed.
- Tops ordered separately.

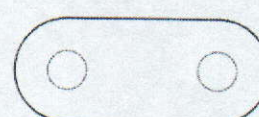
To Order, Specify:

- 1) Product number.
- 2) Wood finish.

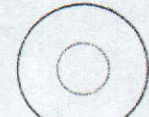
Base Placement:



168 x 48



117 x 48



24" base, 60" table



DuPage Water Commission

PSC-04/08

Lexington Pumping Station

Division A – Generator Facility

Division B – Variable Frequency Drives

Monthly Progress Report #3

April 2009

Prepared by:

Eric Darlinger / MAI
Jeremy Nakashima / MAI
Dan Dragan / G&H



GREELEY AND HANSEN



McDonough Associates Inc.
Engineers/Architects

May 7, 2009

Monthly Progress Report – April 2009

The following is a brief report of the progress achieved on the PSC-04/08 project at the Lexington Pumping Station for the month of April 2009.

I. Summary of Work Performed and Project Status

During the first half of April, the PSC-04 project has progressed as expected. Installation of the concrete deadman wall and tie-backs for the soldier-pile wall for the South Access Road was completed, placement of the remaining backfill for the road and excavation to sub-grade east of the reservoir were substantially complete. In contrast, the second half of the month brought slower than expected progress on road aggregate placement and traffic control installation. Current expectations place road completion for use in mid-May, approximately two weeks behind schedule. JJH is currently evaluating future tasks for development of a plan to compress the remaining schedule and get back on plan. Photographs of April's progress can be found at the end of this report.

II. Project Progress

The project progress summary below reflects the Board approved change order executed in April.

- Contract Commencement Date July 21, 2008
- Contract Duration 730 calendar days
 - Days Expended 283
 - Percent Time Complete 38.8%
- Approved Time Extension 100 days (Generator Delivery Period only)
- Final Completion Date July 20, 2010

III. Planned Work – May 2009

In May, JJH anticipates completing the South Access Road to allow for use by the midpoint of the month. This will include completion of the road aggregate placement and installation of the traffic control system. Actual turnover of the road for use will coincide with progression to work on the north side of the reservoir.

IV. Construction Costs and Progress Payments

The second payment request is currently in the process of being reviewed, so the summary of progress payments includes the first payment and has been updated to reflect change order #1.

- Original Contract Price \$ 17,209,000.00
- Approved Change Orders \$ 28,331.37
- Approved Change Order Percentage 0.2%
- Revised Contract Price \$ 17,237,331.37
- Completed to Date \$ 328,104.99
- Percent Completed to Date 1.9%



Monthly Progress Report – April 2009

V. Pending Action Items and Project Issues

A. *Building Permit*

Construction on the north side of the reservoir cannot begin until the Chicago Office of Underground Coordination (OUC) issues their recommendation of approval to the Chicago Building Department. JJH is working with OUC to secure the permit for the north road. The Chicago Transit Authority (CTA) indicated on April 17th that they have no exceptions to the proposed solutions for alleviating their concerns of potential structural impact from the Generator and Generator Electric buildings to their existing infrastructure. The OUC package has been resubmitted to for review. Permit approval and the beginning of work on the north side of the reservoir are currently anticipated for mid-June.

B. *Department of Environment*

The Department of Environment has indicated that they have no exceptions to the underground fuel storage tanks permit application. The DOE forwarded the permit application to the Department of Zoning for approval.

C. *Change Orders*

As previously mentioned, change order #1 was executed in April.



Monthly Progress Report – April 2009

Deadmen wall and tie-back rod installation for soldier pile retaining wall



Monthly Progress Report – April 2009

Excavation to sub-grade for the South Access Road



South Road aggregate placement



Electric Generation Facility & Office/Garage Expansion



DuPage Water Commission

600 E. Butterfield Road

Elmhurst IL 60126

PSD 7/08

Monthly Progress Report #4

April 2009





May 1, 2009

Mr. Chris Bostick
Facilities Construction Supervisor/Safety Coordinator
DuPage Water Commission
600 East Butterfield Rd.
Elmhurst, IL 60126

Subject: DuPage Water Commission
Electrical Generation Facility and Office/Garage Expansion
Monthly Construction Progress Report No. 4

Dear Mr. Bostick:

We herewith submit our Progress Report No.4 for the construction of the Electrical Generation Facility and Office/Garage Expansion for the DuPage Pumping Station covering the one month period from April 1, 2009 through April 30, 2009.

1. *Overview and Status of the Work*

The Electrical Generation Facility and Office/Garage Expansion for the DuPage Pumping Station project consists of the renovation and expansion of the Existing Service Building in both the North and South directions. The North expansion is to create office space, the South expansion is to house four Standby 2500 kW Diesel Engine-Generators and the existing portion is to be the Electrical Room. Due to the conversion of the Existing Service Building a new Garage is to be built. Also, the existing Upper Parking Lot is to be relocated to the Northwest area of the site to allow for the installation of a covered parking structure. The project includes site piping, grading and pavement to accommodate the changes.

In the past month, Williams Brothers Construction, Inc. (WBCI) has finished installing forms, rebar and concrete for the Day Tank area in the Existing Service Building. They began installing forms, rebar and concrete for the Garage Foundation. They backfilled and installed under-slab plumbing for the Generator and Office Buildings. They began installing structural steel for the Office and Generator Buildings. They began the installation of the new Butterfield Rd. entrance with storm piping and manholes. Also, they finished installing the sanitary sewer piping and manholes.

2. *Scheduled Upcoming Work/May, 2009*

In the next month, WBCI plans to finish installing and backfilling the Garage foundation, excavate, install rebar and forms and place concrete for the Security Wall. They plan to

finish installing structural steel for the Generator and Office Buildings and continue installing under-slab electrical conduit and plumbing for the Garage, Existing Service, Generator and Office Buildings. WBCI also plans to cut, fill and install structural fill for the new Upper Parking Lot. Finally, WBCI plans to install all storm sewer work and structural fill for the new Butterfield Rd. entrance.

3. *Project Schedule*

The April 2009 Construction Schedule update indicates the project's final completion date and the Engine-Generator deliveries will remain on schedule.

Contract No. PSD-7/08

▪ Contract Execution Date	November 25, 2008
▪ Contract Duration (final Completion)	730 calendar days
▪ Time Expended	157 days
▪ Percent Time Complete	21.51%
▪ Approved Time Extensions	0 days
▪ Final Completion Date	November 24, 2010

4. *Construction Costs and Progress Payments*

Applications for Progress Payments have been submitted each month by Williams Brothers Construction, Inc. to commensurate with the work performed. The following is a summary of progress payments.

Contract No. PSD-7/08

▪ Original Contract Price	\$16,970,000.00
▪ Approved Change Orders	\$ 78,175.00
▪ Approved Change Order Percentage	0.46%
▪ Revised Contract Price	\$17,048,175.00
▪ Total Completed To Date	\$ 1,673,063.44
▪ Percent Completed To Date	9.81 %

5. *Pending Action Items and Issues*

- There are few small Potential Change Orders pending for relatively minor changes requested by IDOT and the DuPage Water Commission.

Should you have any questions, please do not hesitate to call.

Very truly yours,

Mr. C. Bostick
May 1, 2009
Page 3

Robert J. Reid
Resident Engineer
Camp Dresser & McKee Inc.

cc: David D. Tucker

Mr. C. Bostick
May 1, 2009
Page 4



Engine-Generator Equipment Pads



Overview of Generator Building Progress



Office Building Construction



Day Tank Fuel Containment in Existing Service Building

DU PAGE WATER COMMISSION

ELECTRICALLY TEST SECONDARY 5KV LINES FROM TRANSFORMER YARD INTO THE DPPS ELECTRICAL ROOM (QRE4-002A)

ACCT. # 60-6621 AUTHORIZED BY R-15-09

ALDRIDGE ELECTRIC, INC.

844 E. ROCKLAND ROAD

LIBERTYVILLE, IL 60048

	FRI 03/06/09	HOURS UNITS	RATE	EXTENTION	FEE	AMOUNT
LABOR						
ELEC. - (PUSTOLA)	5.50	5.50	62.32	342.76		
ELEC. - (COWELL)	5.50	5.50	62.32	342.76		
ELEC. - (LYNCH)	6.00	6.00	62.32	373.92		
				<u>1,059.44</u>	45.00%	1,536.19
SUPPLIES				0.00		
				<u>0.00</u>	10.00%	0.00
EQUIPMENT						
GAS 143HP SERVICE TRUCK	6.00	6.00	14.92	89.52		
GAS SERVICE VEHICLE	5.50	5.50	14.88	81.84		
2500 VOLT MEGGER	5.50	5.50	5.08	27.94		
				<u>199.30</u>	5.00%	209.27
						<u>1,745.46</u>

CONFIRMED

BY

DATE

4-15-09

ACCT. # 60-6621

AMT

1,745.46

ACCT. #

AMT

APPROVED

[Signature]